

SF



SF 600 L



SF 500 N

Manuel sheeter with conveyor belt on mobile base

Use

The SF manual sheeter enables any type of dough to be turned and pinned

A particular attention has been paid to the conception and the carrying out of their main parts to grant very good productions and excellent quality of rolling, fine, precise and always regular.

The large diameter of the two rolling cylinders (80 mm) grants a better dragging of dough avoiding it sticks to them. The rolling thickness is very well controlled thanks to the easy adjustment of the rolling cylinders by means of : a control lever opening and closing them, a endless adjustment hand wheel and graduated scale, clear and easy to read, for the manual sheeter ; a computer able to manage up to working programmes settable by customers and early cycle end device for the semi-automatic sheeters.


The automatic insertion of the differentiated speed between the entry and the exit conveyor belt, the first one 35% slowed in comparison to the second one, avoids possible dough obstructions, stretching and tearing at the rolling entry.

Construction

- On pivoting castors
- Epoxy painted (food-grade) structure
- Hand or foot reversal
- 24 V control circuit
- Easily removable non-stick scrapers
- Flour container in food-grade plastic
- 60 mm pinning rolls in hard chrome steel
- Working width : 500 or 600 mm

- Belt length :
SF 500 N: 700 mm
SF 500 L and SF 600 N: 1000 mm
SF 600 I and SF 600 LT: 1400 mm
- Roll opening : 40 mm
SF 600 LLT : 1400 + 2000 mm
- Models SF 600 LT and SF 600 LLT include the 2-speed cutting device (without tool) on the left (on the right to order)
- Lifiable belts
- Polyurethane belt
- Stainless steel safety grid
- V-belt drive
- Supply voltage: three phase 400 V 50 Hz

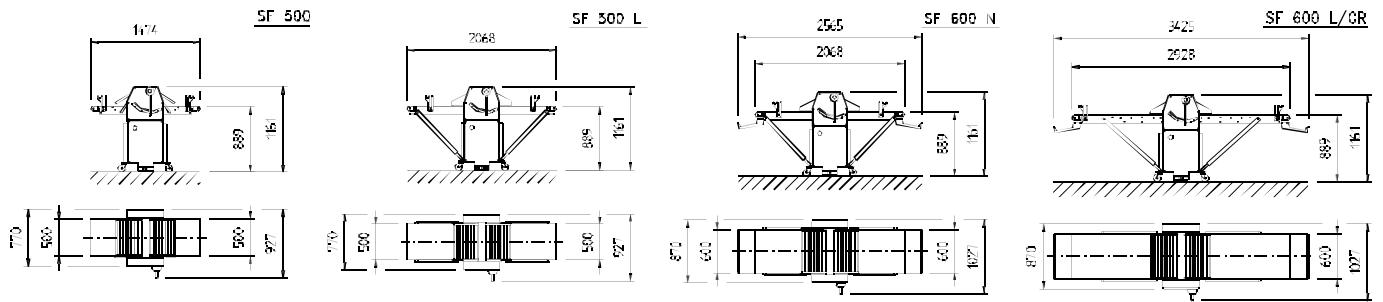
Reference	Model
88700001	SF 500 N
88700002	SF 500 L
88700003	SF 600 N
88700004	SF 600 L
88700013	SF 600 LT
88700020	SF 600 LLT

Machine complies with  regulations

 **BONGARD**

32, route de Wolfisheim - F-67810 Holtzheim
Tél : 33 (0)3.88.78.00.23 - Fax : 33 (0)3.88.76.19.18
www.bongard.fr - bongard@bongard.fr

SF Manuel sheeter with conveyor belt on mobile base



General features

Model	SF 500 N	SF 500 L	SF 600 N	SF 600 L	SF 600 LT	SF 600 LLT
Reference	88700001	88700002	88700003	88700004	88700013	88700020
Belt width	500 mm	500 mm	600 mm	600 mm	600 mm	600 mm
Belt length	700 mm	1000 mm	1000 mm	1400 mm	1400 mm	1400/2000 mm
Out-feed belt speed	48 cm/s	48 cm/s	57 cm/s	57 cm/s	57 cm/s	57 cm/s
Power	0.55 kW	0.55 kW	0.75 kW	0.75 kW	0.75 kW	0.75 kW

Options

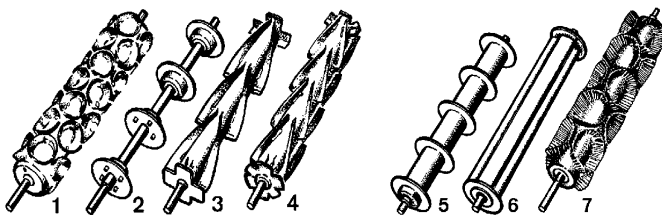
Reference	Model	Description
88700019	SF 600 L et LT	Stainless steel structure

Accessories for SF 600 LT and SF 600 LLT

Reference	Description	Raw product weight	Dimensions B x H	Diagram
88700201	3 croissants	50 – 80 g	130 x 170 mm	2 and 3
88700210	6 croissants	14 – 20 g	70 x 85 mm	
88700211	5 croissants	17 – 23 g	70 x 102 mm	
88700212	5 croissants	20 – 27 g	80 x 102 mm	
88700213	4 croissants	28 – 35 g	90 x 127 mm	
88700214	4 croissants	35 – 45 g	110 x 127 mm	4 and 5
88700215	3 croissants	40 – 55 g	100 x 170 mm	
88700216	3 croissants	60 – 90 g	150 x 170 mm	
88700217	3 croissants	70 – 100 g	170 x 170 mm	
88700203	5 squares	50 – 80 g	110 x 110 mm	5 and 6
88700218	4 squares	70 – 100 g	130 x 130 mm	
88700219	3 squares	120 - 170 g	170 x 170 mm	

Possible options

88700204	5 smooth edged rounds	30 - 50 g	Diameter 100 mm	
88700220	9 smooth edged rounds	12 - 20 g	Diameter 60 mm	
88700221	7 smooth edged rounds	22 - 30 g	Diameter 80 mm	1
88700222	5 smooth edged rounds	50 - 70 g	Diameter 120 mm	
88700223	4 smooth edged rounds	65 - 85 g	Diameter 140 mm	
88700205	5 scallop edged rounds	30 - 50 g	Diameter 100 mm	7
88700206	5 smooth edged ovals	50 - 80 g	180 x 90 mm	
88700209	5 scallop edged ovals	50 - 80 g	180 x 90 mm	
88700202	Rotary knives for 2 to 5 crossways cut-outs of 100 to 260			



Tools and rotary knives

The SF 600 LT and LLT pinners are supplied without tools. A tool for croissants consists of 2 rollers, one a ZIG-ZAG (diagram 3 or 4) and 1 with discs (diagram 2 or 5). A tool for rectangles consists of 2 rollers, one a cross-type (diagram 6) and one with discs (diagram 2 or 5)